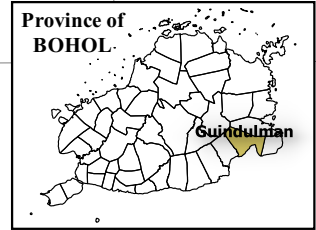


124°23'0" 124°25'0" 124°27'0" 124°29'0" 124°31'0"



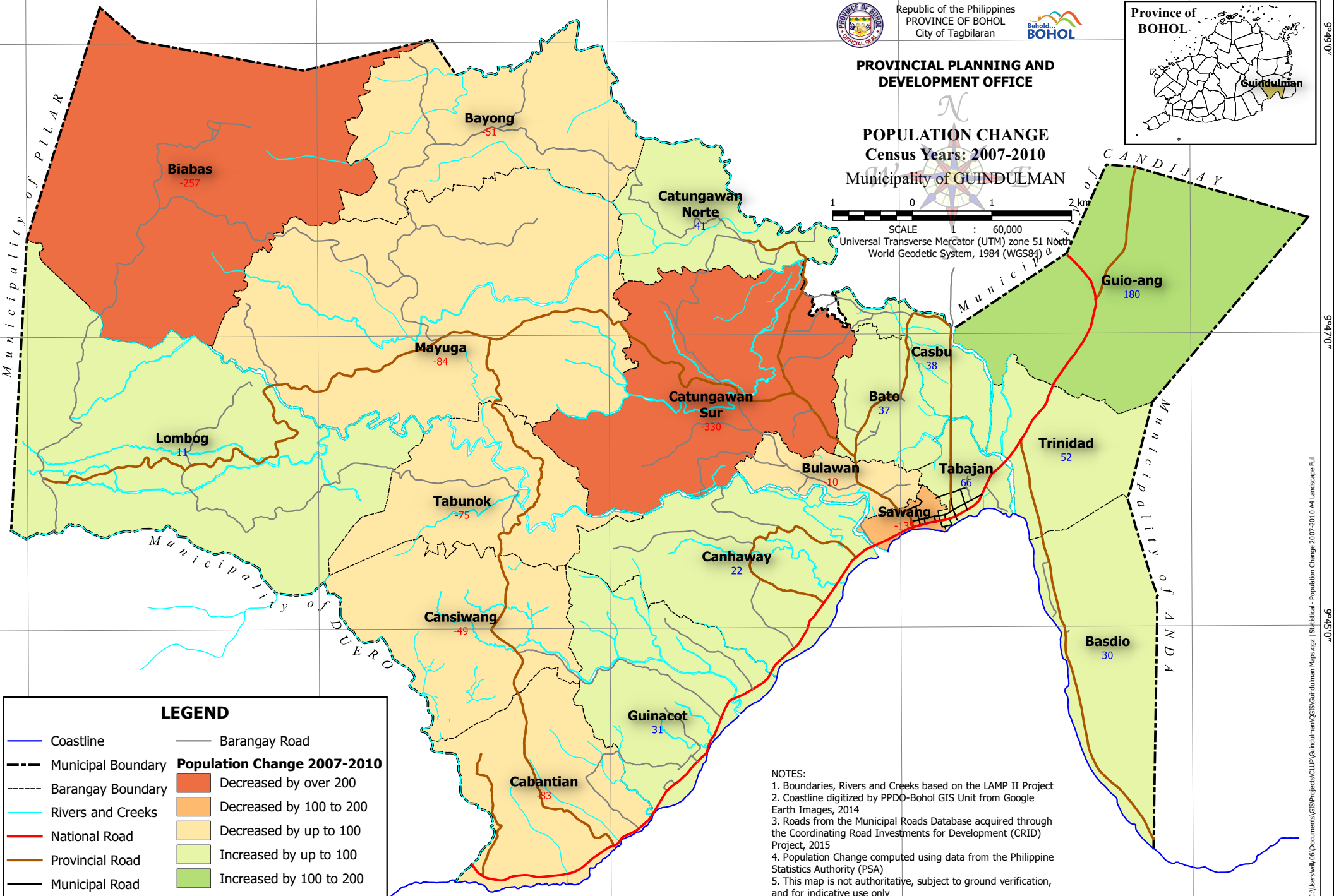
Republic of the Philippines
PROVINCE OF BOHOL
City of Tagbilaran



**PROVINCIAL PLANNING AND
DEVELOPMENT OFFICE**

**POPULATION CHANGE
Census Years: 2007-2010**
Municipality of GUINDULMAN

1 0 1 2 km
SCALE 1 : 60,000
Universal Transverse Mercator (UTM) zone 51 North
World Geodetic System, 1984 (WGS84)



LEGEND

Coastline	Barangay Road
Municipal Boundary	Population Change 2007-2010 Decreased by over 200
Barangay Boundary	Decreased by 100 to 200
Rivers and Creeks	Decreased by up to 100
National Road	Increased by up to 100
Provincial Road	Increased by 100 to 200
Municipal Road	

NOTES:
 1. Boundaries, Rivers and Creeks based on the LAMP II Project
 2. Coastline digitized by PPD0-Bohol GIS Unit from Google Earth Images, 2014
 3. Roads from the Municipal Roads Database acquired through the Coordinating Road Investments for Development (CRID) Project, 2015
 4. Population Change computed using data from the Philippine Statistics Authority (PSA)
 5. This map is not authoritative, subject to ground verification, and for indicative use only

124°23'0" 124°25'0" 124°27'0" 124°29'0" 124°31'0"